

THE ORIGINAL ITALIAN SURFACE



Use your app to read the QR-code you will find in this catalogue and see some realizations made with our materials.

DOWNLOAD NOW THE IPHONE/IPAD APP



“SM surfaces”

COMPANY PROFILE

Long term experience, constant research and innovation, with particular attention to the growth of all markets, both home and International, commercial and residential, are the hallmark of each SANTAMARGHERITA ® product.

Santa Margherita S.p.A. has operated since 1962, by the two founding families that own still today. The HQ of Santa Margherita Group is located in Volargne (Verona), the heart of the Italian Stone District. It includes production plants, R&D and offices.

Santamargherita is driven by a passion handed down from generation to generation with deep roots in Valpolicella, a fascinating land stretching between Garda lake and Verona, with its culture, tradition and skills. Though we export to over 70 countries, we still engineer, manufacture and test all our products in the same place where we started more than 50 years ago. Our dedication to sustainability and creativity has remained unchanged.

Here we welcome our customers, architects, designers, fabricators, installers and innovators to share ideas and turn them into reality. Our flexibility lets us meet new architectural trends, both in the commercial and the residential building sectors. We can do it with our standard ranges, made from elegant and subtle hues, and with the more innovative and exclusive lines made from beautiful creative colors and exotic finishes.

WHY SANTA MARGHERITA

- Design made in Italy
- Direct personal assistance (i.e. advice in material selection, sample shipment via overnight courier, etc.)
- Development of customized colors
- Technical and installation assistance (also in cooperation with adhesives' manufacturers)
- 10 years warranty
- Long-term after sales support and service
- Worldwide shipments



ORIGINAL ITALIAN SURFACE®

The phrase “THE ORIGINAL ITALIAN SURFACE” encompasses all SANTAMARGHERITA® true values.

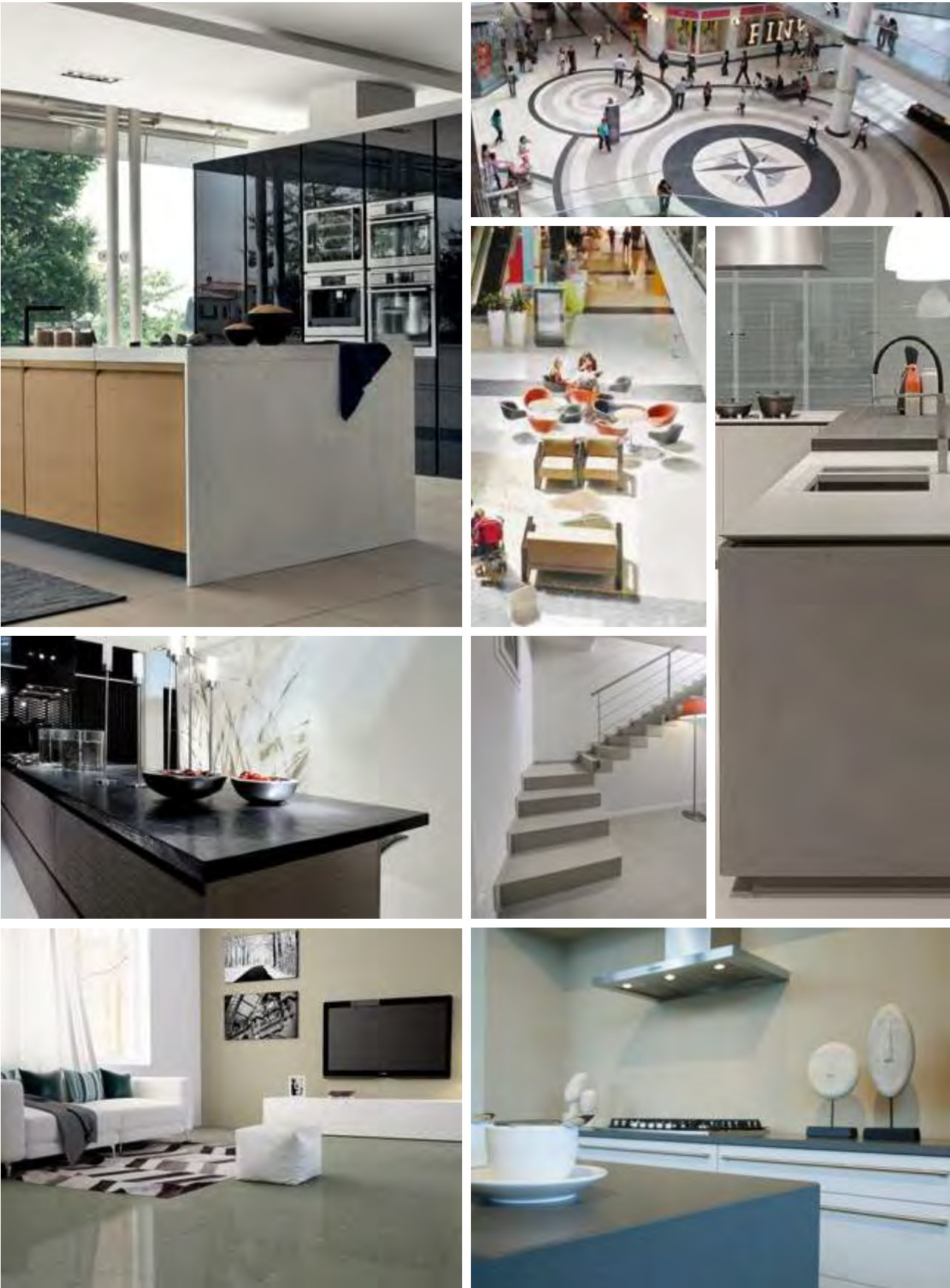
4

THE ORIGINAL – Because of continuous research, over forty years we have been able to continually launch into the market place both technological and stylistic new and original products. These are available in a wide range of colors and exclusive finishes making us leaders in the field.

ITALIAN – A guarantee of quality and reliability are but two of the main features that make products carrying the badge “made in Italy” so prestigious. Continuous development and expertise ensures Italy is a world leader in design and architecture.

SANTAMARGHERITA® adheres to these values and applies them to unique and unequalled products.

SURFACE – Marble based and quartz based surfaces are the backbone of our company. Our continual research and progressive development move us forward and makes us leaders in our field. We provide the market with as many alternatives as possible to enable the client to clad and adorn their private houses or prestigious buildings with beautiful stone.



5

QUARTZ

PRODUCT DESCRIPTION - Elegant and resistant, SANTAMARGHERITA® quartz (SM Quartz) is the ideal surface for high traffic and everyday use in both commercial and residential environments. SANTAMARGHERITA® Quartz is crafted from up to 93% quartz (Silicon Dioxide – SiO₂) and carefully selected resins that are compacted under vibration, vacuum, and pressure, into durable non porous slabs that then undergo an intense grading and polishing process to give the Italian quality finish that SANTAMARGHERITA® is known for.

COLORS AND FINISHES – Due to the use of natural Quartz and a wide range of pigments along with advanced manufacturing techniques, SM Quartz products offer a large choice of colors, textures, and exclusive finishes. Nuances, composition, and sizes can be fully customized. Each of the SM Quartz® colors were inspired by the natural beauty of the Northern Italian landscape. Whether the shades of stone from Veneto or the painted frescos of Venice, each color was born from the rich landscape and culture of Italy. The combination of the natural beauty of Quartz with a color palette inspired by the region have led to a timeless yet modern collection to fit every design application.

6

STANDARDS - All SANTAMARGHERITA® products comply with the strict international standards required for the food industry and safe indoor environments.



ANSI/NSF Standard 51 - Food Equipment Materials: SANTAMARGHERITA® Quartz is safe for use in food preparation areas due to its non porous sanitary surface.



Member of Green Building Council Italia

SANTAMARGHERITA® ranks high with the Green Building Council allowing for LEED points to be awarded with the use of our products. SANTAMARGHERITA® has been approved with the newest LEED V4 status.



Greenguard Gold Certified

SANTAMARGHERITA® surfaces comply with the American Greenguard Environmental Institute certification meeting the most stringent requirements for indoor air emissions of non-volatile compounds. GREENGUARD Gold signifies the highest standard possible for use in school environments.



Kosher Certified

SANTAMARGHERITA® surfaces are KOSHER certified based on all the materials used in making SANTAMARGHERITA® Quartz along with the manufacturing environment.

CONSISTENCY IN COLOR – The manufacturing process of SM Quartz® blends nature and technology into an unparalleled surfacing material. The color of each SM Quartz® slab depends on the quality and color of the natural materials and the colors mixed within the resin binder. As with any product made with natural materials, there can be some variation in background color and pattern and aggregate size and distribution. This is not considered a defect but part of the natural beauty and uniqueness of each individual slab. Although there is more consistency than natural stone, color, background or shade variations not visible from 6 feet away are considered acceptable. This makes SM Quartz a preferred choice for designers and large commercial projects where color consistency is a must.

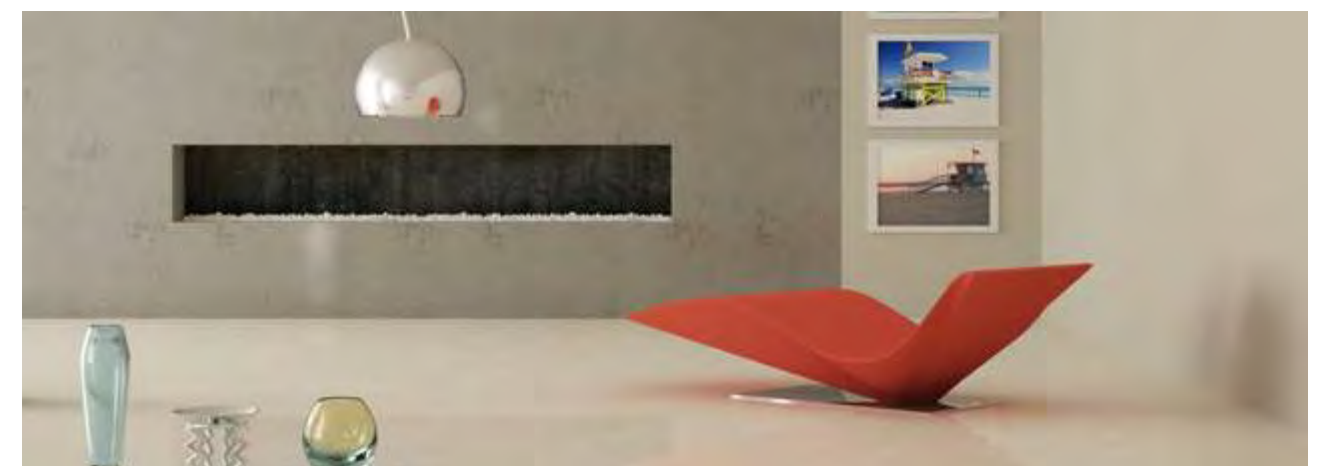
USES – With outstanding technical characteristics and a wide range of colors and textures, SANTAMARGHERITA® surfaces fit every project from the small residential application to large commercial spaces.

SANTAMARGHERITA® Quartz is resistant to flexing, abrasion, and acids. It's ideal for a wide variety of applications.

Waterjet cutting and sublimation printing are also available for further personalization.

- Countertops and backsplashes
- Shower walls and tub surrounds
- Lavatories
- Toilet room partitions
- Wall cladding and wainscot
- Tables and desk tops
- Reception desks and service counters
- Fireplace mantles and surrounds
- Elevator cab walls
- Bar tops
- Stair risers and treads

7



F-A-B (Features - Advantages- Benefits)

Stain-Resistant

SM Quartz® is made primarily of natural quartz (93%) which is a crystalline mineral that is non absorptive. When bound with the polymer resins, SM Quartz® becomes non-porous, extremely stain resistant, and very durable. Unlike natural stone, SM Quartz® does not require the application of a sealer. This means years of hassle free surfacing that never needs to be sealed and resists staining.

Scratch-Resistant

SM Quartz is made up primarily of Natural quartz which is classifiedas as a 7 on Moh's Hardness Scale, a scientific scale that ranks the hardness of minerals (Diamond is a 10). This quality makes SM Quartz® resistant to scratching. This means that unlike many other surfacing options, SM Quartz resists scratching for worry free use.

Heat-Resistant

SM Quartz® is capable of enduring heat from normal cooking temperatures up to 375 degrees Fahrenheit for a short duration. Trivets are recommended to protect the surface and prolong the product lifetime. Do not place electric skillets, frying pans, griddles or crock-pots, directly on the surface without the use of a protective base. This means that like natural stone, SM Quartz is highly resistant to burning.

Hygienic

SM Quartz is manufactured to be hygienic and to reduce the opportunity for bacteria to grow. This makes SM Quartz counters appropriate for food preparation and consumption. SM Quartz is rated by the National Sanitation Foundation (NSF) as a safe countertop and is KOSHER certified.



ADVANTAGES OF SM QUARTZ® VS. GRANITE

SM Quartz® offers unparalleled quality to any design poject. Due to the clarity of the quartz stone, and the patented, advanced technology of polymer resins and pigments, SM Quartz® provides a durable surface that is non-porous, and resistant to heat, scratches and stains. All colors were inspired by the beauty of Italy.

Unlike natural stone, SM Quartz is consistent in both color and quality. This ensures color match for your projects and also guarantees durability that is backed by a 10-year warranty.

	GRANITE	SM QUARTZ
Resistant to acidic foods	Mostly	Yes
May be damaged by cleaning liquids	Yes, depending on ingredients. Use gentle dish soaps.	No
Porous	Yes	No
Stainable	Yes	No
Heat resistant	Yes	No
Scratch resistant	Mostly	Yes
Low maintenance	Requires sealing, clean up spills immediately	Yes
Warranty	No	Yes



FAQ

1. What is SM Quartz® surface?

SM Quartz® is composed of 93% natural quartz mineral blended with advanced polymer resins and pigments.

2. What makes SM Quartz® resistant to staining?

SM Quartz® is composed of 93% natural quartz and 7% polymer resin binder. Natural quartz is non porous and the polymer resins that bind the quartz seal the slab making it a non absorptive surface that never requires sealing.

3. How heat-resistant is SM Quartz®?

SM Quartz® can endure normal cooking temperatures found in the kitchen up to 375oF for a short duration, without the fear of scorching or burning. It is still recommended that hot pads or trivets are used to protect the surface. Do not place electric skillets, frying pans, griddles or crock-pots, directly on the surface without the use of a protective base.

4. How do you care for SM Quartz®?

- For everyday cleaning use a damp cloth or paper towel.
- For greasy or sticky spots, liquid detergent may be required.
- For difficult or dried spills, a ph neutral cleaner can be used with a non abrasive pad.

5. Will dark colors require more maintenance?

All dark colors of any surfacing material, including SM Quartz, require more maintenance. Under ordinary use, darker colors will more readily show dirt, fingerprints, and watermarks when compared to lighter colors and patterns.

6. Does SM Quartz® have seams?

Depending on the layout of your kitchen, seams might be made, however, the countertop pieces are placed close together and bonded with color-coordinated resin.

Sm Quartz® is not a seamless product, seams are visible.

A well installed seam will be smooth but can be felt and seen. Due to slight thickness variations and tolerances, it is possible that one side of the seam may be raised. Where there are seams, there can be slight variance in the color or pattern of adjoining pieces. The exact number of seams in a countertop will depend on the layout of the countertop and the number of slabs purchased to provide for this layout. Please note that requests for fewer or no seams will increase the number of slabs that must be purchased, thereby increasing the price. A certified Fabricator Installer can show you exactly where seams will be located on your countertop.

7. Does SM Quartz® have lamination lines?

SM Quartz® is available in two diffeent thicknesses, 3/4" (2 cm) and 1 1/4" (3 cm). The process of lamination is joining a thin strip of material under the front edge to make the edge profile thicker. Just like other stone surfaces, lamination may be required depending on the project. As with all stone products, a lamination line is visible when two pieces of material are adhered together to create a thicker edge, like the 1 1/2" (4 cm) front edge.

8. What does my 10-year warranty cover?

SM Quartz® offers a 10-year limited transferable warranty, warranting that the material will be free of manufacturing defects. This warranty covers failures caused by manufacturing defects which may occur during the first 10 years after the original installation. If a defect is identified during the first 10 year period, Santamargherita will, at its option repair or replace the defective SM Quartz® materials. This does not cover replacement labor cost. Santamargheritas' warranty does not cover damage caused by physical abuse, misuse or exposure to excessive heat, thermal shock, harsh chemicals or abrasives, product that has been moved or modified from its original installation, shifting or settling of substrate or installation area.

9. Is SM Quartz® uniform and consistent in color and pattern?

The manufacturing process of SM Quartz® blends nature and technology into an unparalleled surfacing material. The color of each SM Quartz® slab is dependent on the quality and color of the natural materials and the colors mixed within the resin binder.

As with any product made with natural materials, there can be some variation in background color and pattern and aggregate size and distribution. This is not considered a defect but part of the natural beauty and uniqueness of each individual slab. Although there is more consistency than natural stone, color, background or shade variations not visible from 6 feet away are considered acceptable. This makes SM Quartz a preferred choice for designers and large commercial projects where color consistency is a must.

10. What is the difference between a polished finish and a honed, antique, brushed, or metropolis finish?

Polished finishes are designed to not only look beautiful and rich but also to provide a maintenance free surface that does not retain dirt. Due to the high polish level Santamargherita is able to achieve, these surfaces are manufactured to be easier to maintain and retain their beauty. Any specialty finish such as honed, antique, brushed, or metropolis are designed to create a certain aesthetic look for a design appeal. These surfaces, however, are not as easy to maintain as a polished finish. Metal marks, fingerprints and other signs of daily living will be more apparent.

These marks can be removed by using a non-abrasive cleaning product such as Soft Scrub® gel with a white micro fiber towel.

11. How is SM Quartz® different from granite?

SM Quartz is an engineered slab made of primarily natural quartz mineral. Granite is a natural stone cut from a block. Since SM Quartz is a manufactured product, it gives the added benefit of a 10-year transferable warranty and unlike natural stone, it is a non porous surface that never needs to be sealed making it maintenance free.

12. What about environmental issues, sustainability, etc?

Italy is not just famous of its design and quality but also for its rigorous safety measures and manufacturing controls. Santamargherita is committed to providing earth conscious products in an environmentally friendly manufacturing atmosphere focused on safety for employees and sustainability for our planet. Quartz is one of the most abundant natural resources in the world.

SM Quartz® is GREENGUARD Indoor Air Quality Certified® for low emissions.

SM Quartz is KOSHER certified.

SM Quartz is LEED V4 certified meeting the newest and highest manufacturing standard required by the building industry.

12

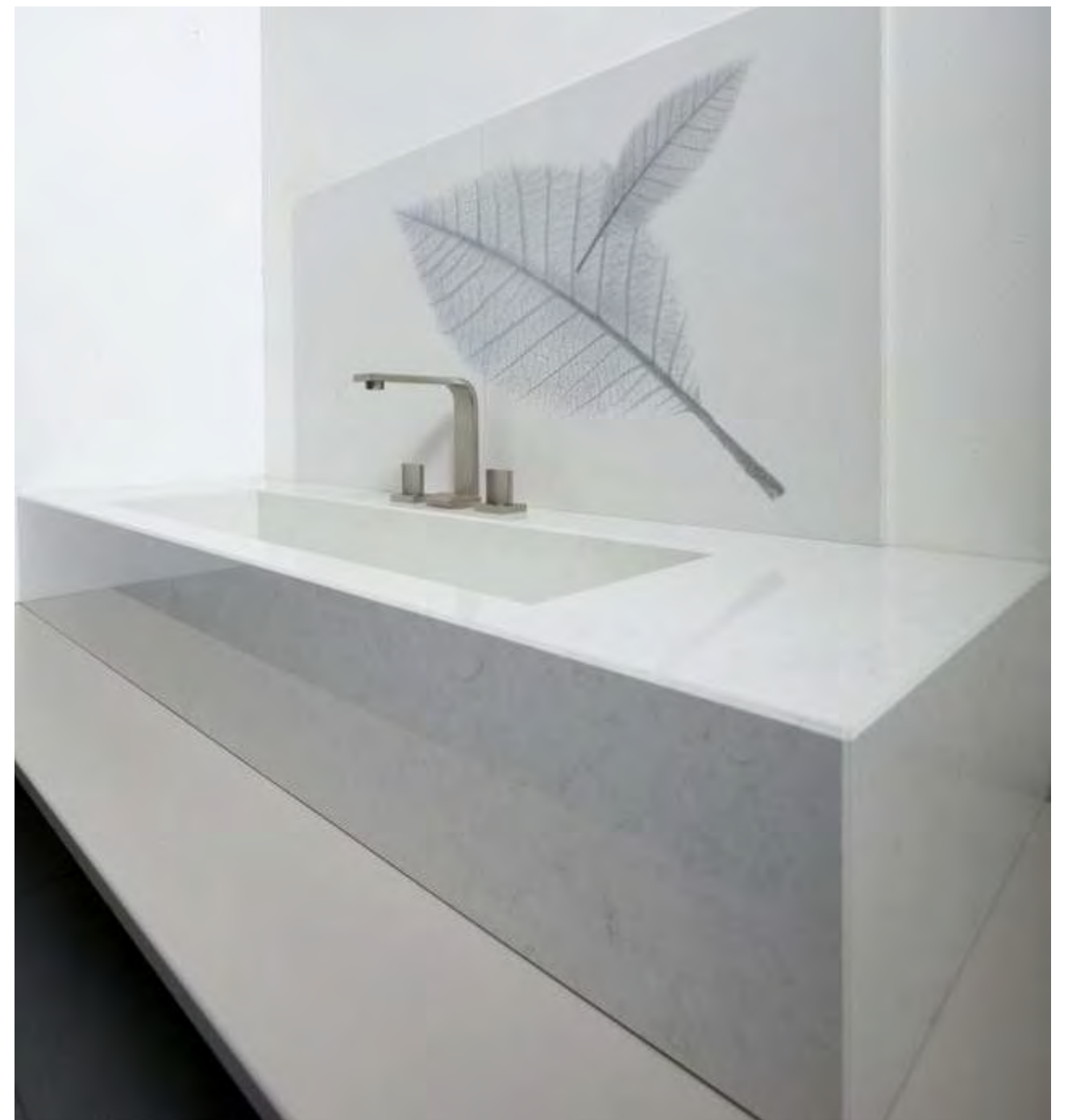


santamargherita

SUBLIMATION

Sublimation is a technique that allows an image to be printed on the surface of a quartz tile. This image is impregnated in the superficial 3 mm of the tiles.

Based on quartz tiles abrasion resistance, it will take years before the sublimated image wears out. The main feature of sublimation is that the surface remains polished, making everyday maintenance easy while at the same time allowing for endless possibilities with design features, customization, and creativity.



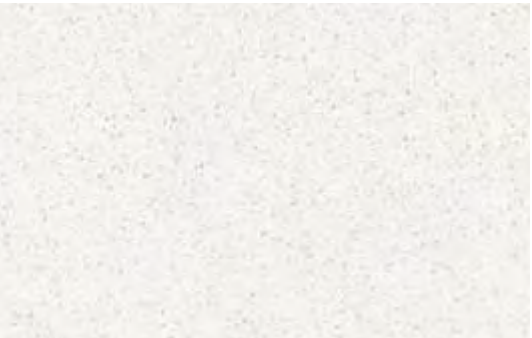
13

santamargherita

Classic



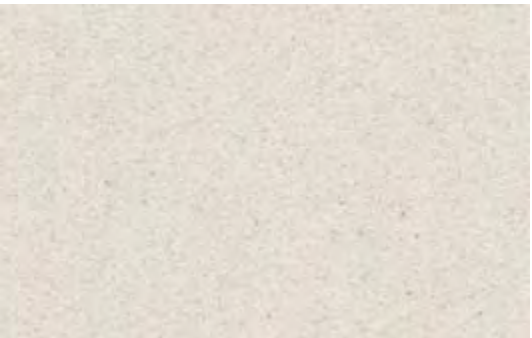
ZENITH - T 560



BIANCO PAPIRO - T 5N8



ISTRIA - T 5G2



SAND WHITE - T 5P4



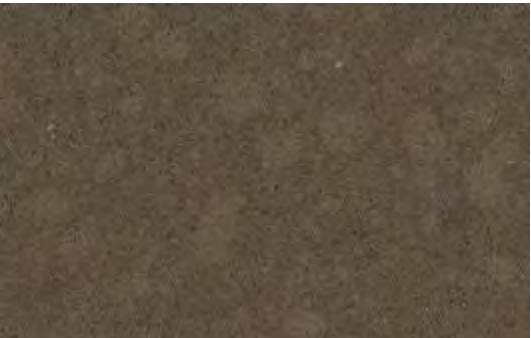
CORDA - T 5J4



MIAMI - T 5G0



MOSA - T 5J3



NEVADA - T 5P5



OTELLO - T 5D8



RIMINI - T 576



APULIA - T 523



ITACA - T 533



CORSICA - T 558



ATENA - T 559



HELSINKI - T 673



CERVINIA - T 647



FLORENCE - T 5B7



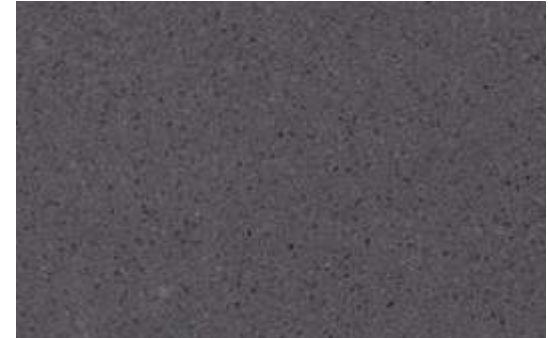
TORRONE - T 5P1



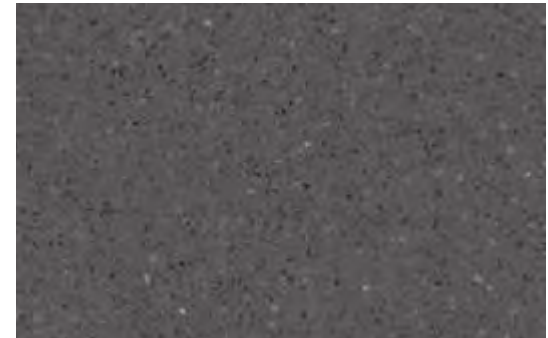
AOSTA - T 513



NERO - T 590



CALEDONIA - T 5L6



BREDA - T 5f9



VICTORIA - T 5P3



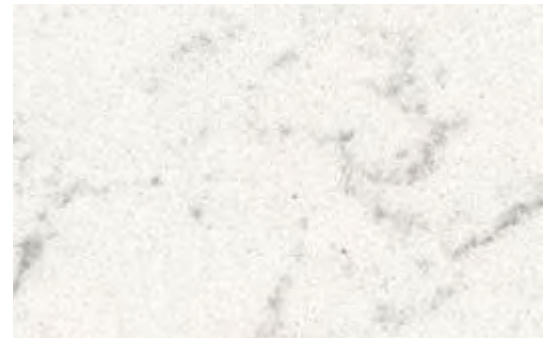
CARNIA - T 578



AMIATA - T 5K3



VEGA - T 5J8



LYSKAMM - T 5J6

Venati



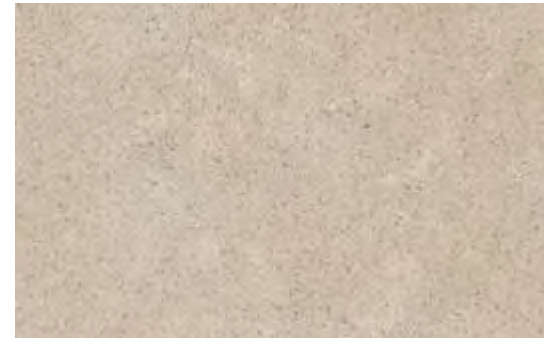
VERMONT - T 5Q8



VIRGINIA - T 5P9



RODI - T 5G1



SABBIA BEIGE - T 5N9



GEORGIA - T 5P6



GRIGIO NUBE - T 5P0



MANAUS - T 5J2



ALBERTA - T 5P2

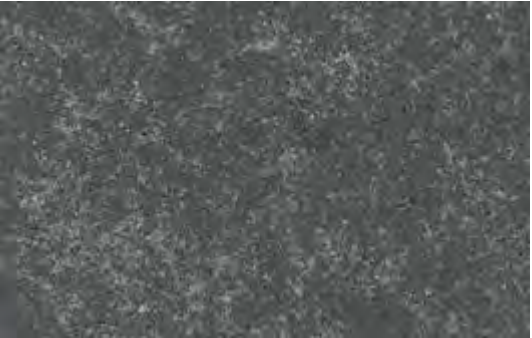


ARDENNE - T 5J0



APPLICAZIONI - APPLICATIONS

Metropolis



METROPOLIS DARK - C05



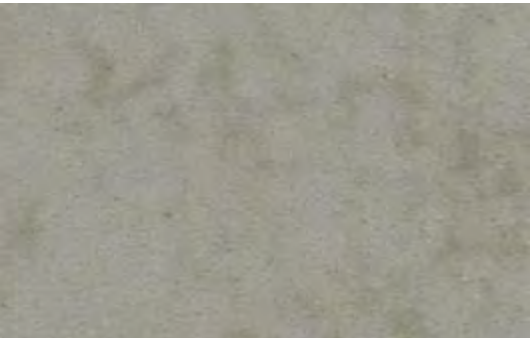
METROPOLIS GREY - C06



METROPOLIS BROWN - C04



METROPOLIS BEIGE - C03



METROPOLIS PEARL - C08



METROPOLIS WHITE - C09



APPLICAZIONI - APPLICATIONS

Wave



WAVE VULCANO - E05



WAVE GUAM - E04



WAVE CANCUN - E02



WAVE MAUI - E07



WAVE CALAIS - E03



WAVE PHUKET - E01



APPLICAZIONI - APPLICATIONS

City



CITY WHITE - T 5Q6



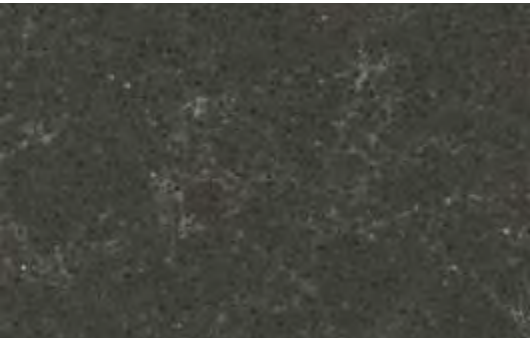
CITY BEIGE - T 5Q2



CITY BROWN - T 5Q4



CITY GREY - T 5Q3



CITY DARK - T 5Q5



APPLICAZIONI - APPLICATIONS

Contract



CONTRACT BLACK - T 505



CONTRACT DARK GREY - T 504



CONTRACT GREY - T 503

Stardust



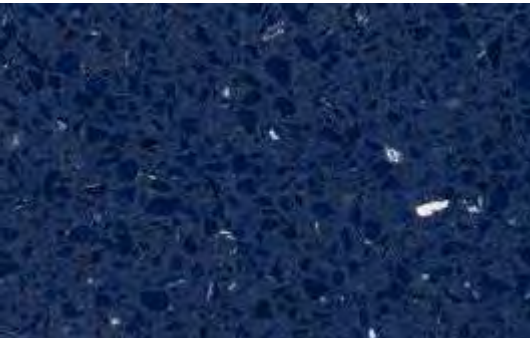
NERO STARDUST - T 603



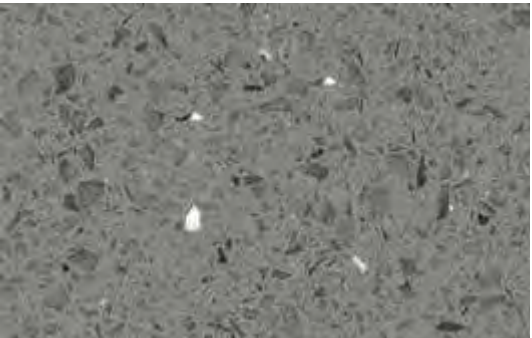
ROSSO STARDUST - T 612



MARRONE STARDUST - T 619



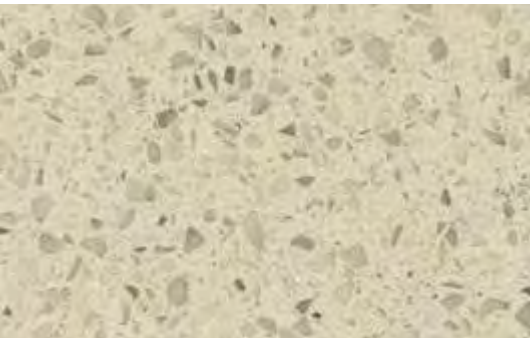
NAVY STARDUST - T 622



GRIGIO STARDUST - T 614



SKY STARDUST - T 611



BEIGE STARDUST - T 608



BIANCO STARDUST - T 609

Glitter



IRON - T 657



PEWTER - T 656



SILVER - T 655



BRONZE - T 658



APPLICAZIONI - APPLICATIONS

SM QUARTZ AWARENESS

- DARK COLORS - All dark colors of any surfacing material, including SM Quartz, require more maintenance. Under ordinary use, dark colors will show dirt, dust, rubs, fingerprints and watermarks more readily than lighter colors and patterns. Dark colors require more care to maintain their appearance.
- IMPACT - Though quartz is a very durable mineral, take special precautions around edges and sink cutouts. Impacts in these areas may chip the material.
- SPECIALTY FINISHES - SM Quartz® slabs come standard in polished finish, however, honed, brushed, antique, and metropolis finishes are also available. Honed, brushed, antique, and metropolis finishes will require more daily maintenance than polished. Signs of daily living will be more apparent. Visible marks, such as metal from pans or utensils or grease marks can be removed by using a non-abrasive cleaning product such as Soft Scrub® gel and a white cleaning cloth or Scotch Brite® pad.
- SIZES - SM Quartz® Quartz products are available in 2cm and 3cm thickness. (approx. ¾" and 1 ¼") Standard Dimension: 55" x 120"Jumbo Size Dimension: 61" x 126"

24 • GLOSS LEVEL - Santamargherita prides itself on the Italian quality polish level achieved on SM Quartz polished slabs. Over all gloss level on a SM Quartz® slab will be between 55 and 65, as measured with a gloss meter.



WAVE & METROPOLIS

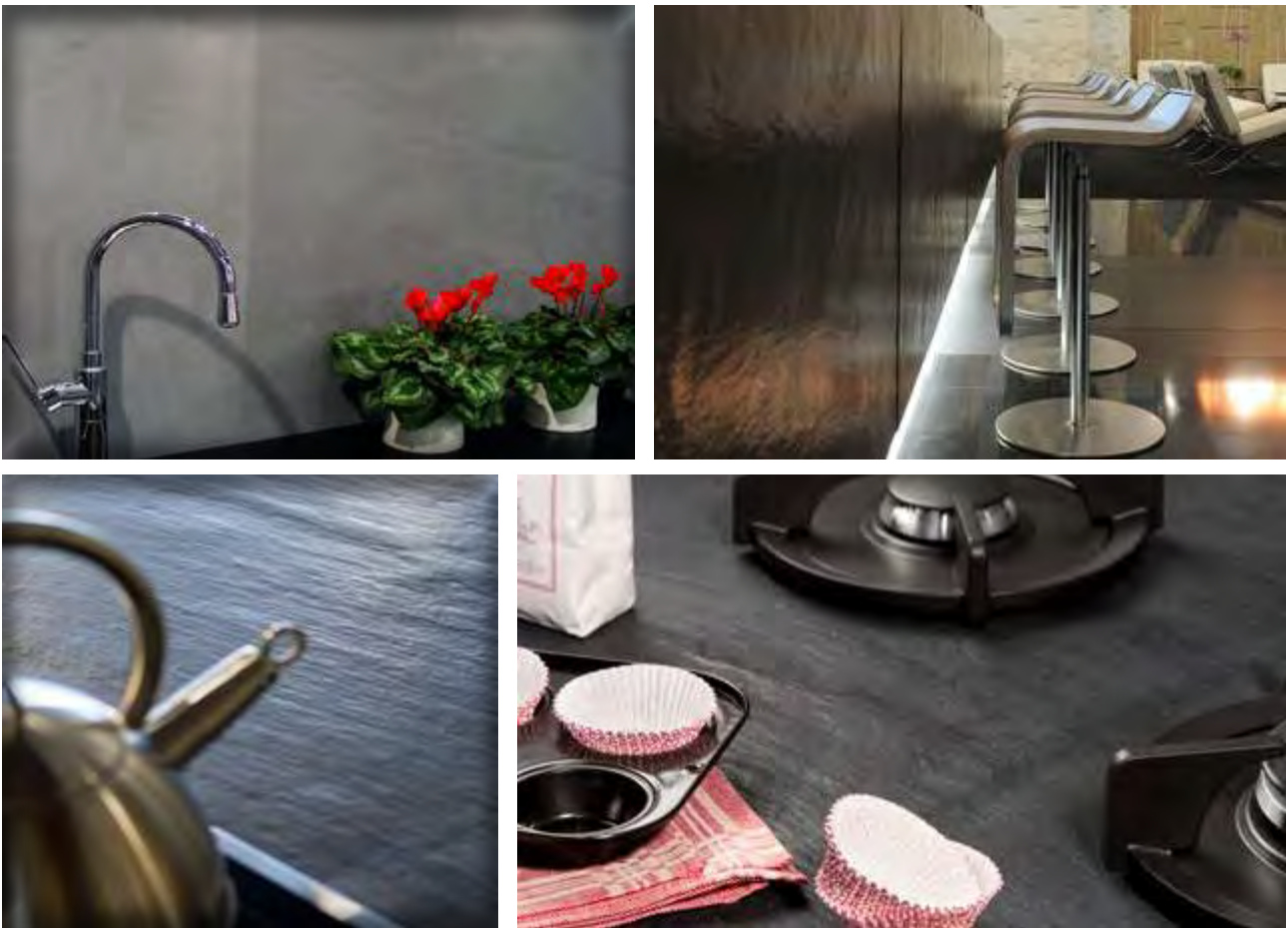
Wave's unique appearance is molded from the cleft finish of natural slate. There may be a certain range of inconsistent variation, such as, channels, dips, ridges, depressions and indentations. Metropolis is molded to look like concrete. There is typically a variation in roughness around edges, depth of divets, and notable ridges down the center of some slabs.

These quartz products are made from natural materials and subject to variations in color, shade and grain structure.

This textured finish gives the surface unique characteristics where no two installations are exactly the same.

We have included several photos of Wave and Metropolis that show some of these variations.

Please note that textured finishes can require more daily maintenance than polished surfaces. This can be more visible with darker colors (finger prints can show in Wave Vulcano and Metropolis dry colors but can easily be removed).



SIZES AND WEIGHT

All collections are available in standard thicknesses and sizes.
Customized size based on slab's dimension can be made to order.

STANDARD SIZES AND WEIGHT OF SLABS

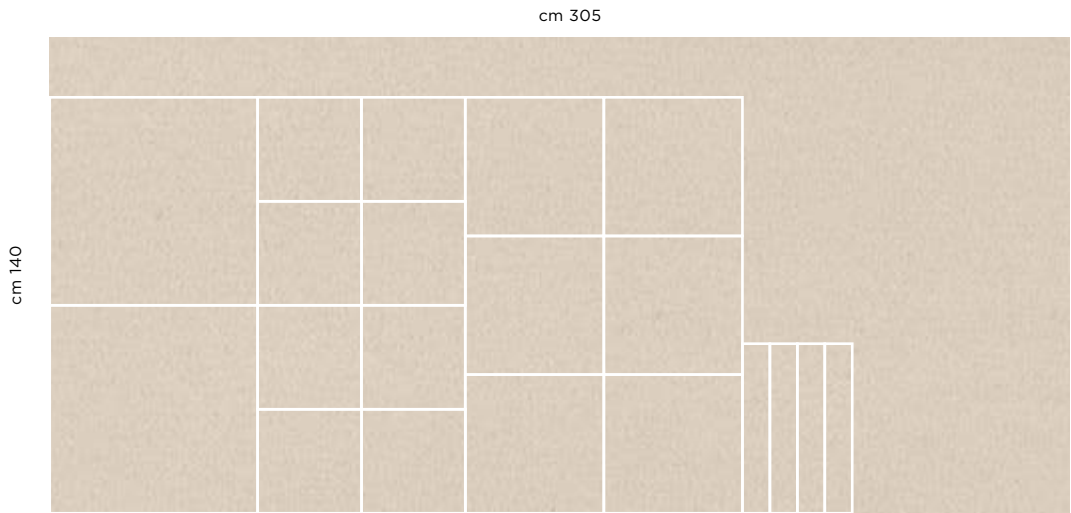
- 3050 x 1400 x 12 mm (120" x 55" x ½" nominal) approx. 130 Kg (290 lbs)
- 3050 x 1400 x 20 mm (120" x 55" x ¾" nominal) approx. 210 Kg (465 lbs)
- 3050 x 1400 x 30 mm (120" x 55" x 1-¼" nominal) approx. 310 Kg (685 lbs)
- 3200 x 1550 x 12 mm (126" x 61" x ½" nominal) approx. 150 Kg (330 lbs)
- 3200 x 1550 x 20 mm (126" x 61" x ¾" nominal) approx. 240 Kg (530 lbs)
- 3200 x 1550 x 30 mm (126" x 61" x 1-¼" nominal) approx. 360 Kg (795 lbs)

Tiles

- Cm 30x30x1.2 (12" x 12" x 1/2")
- Cm 40x40x1.2 (16" x 16" x 1/2")
- Cm 60x60x1.2 (24" x 24" x 1/2")



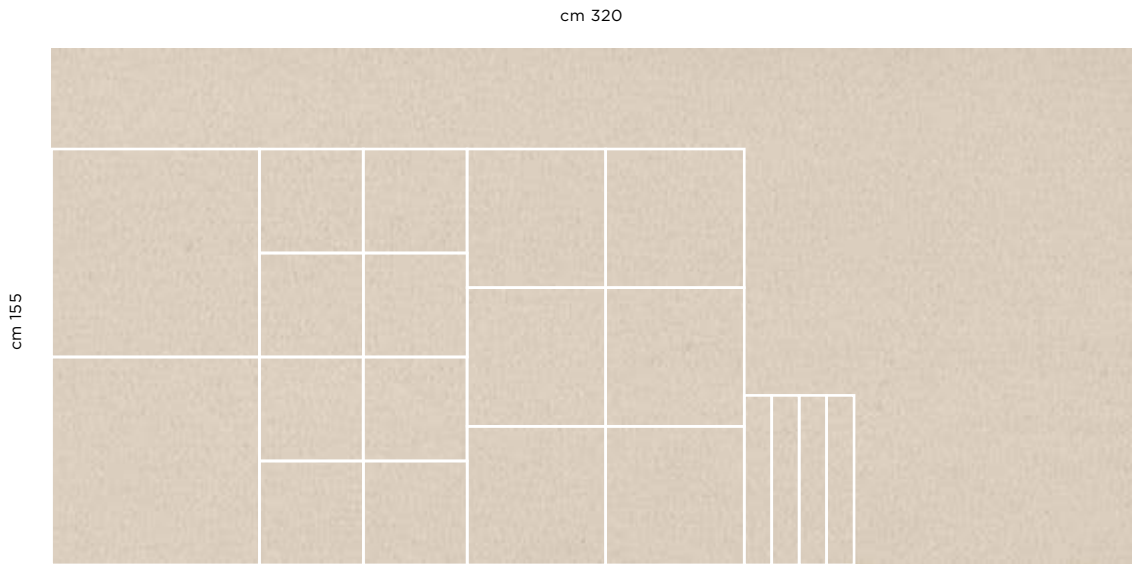
STANDARD SIZES



Slabs	Tiles**	Skirting Tiles**
cm 305 x 140 x 1,2 120" x 55" x ½" nominal	cm 30 x 30 x 1,2 12" x 12" x ½" nominal	cm 50 x 7 x 1 19-¾" x 2-¾" x ¾" nominal
cm 305 x 140 x 2 120" x 55" x ¾" nominal	cm 40 x 40 x 1,2 16" x 16" x ½" nominal	
cm 305 x 140 x 3 120" x 55" x 1-¼" nominal	cm 60 x 60 x 1,2 24" x 24" x ½" nominal	

** Wave'/Metropolis' series are available in slab format only.
* As the surface of Wave' is not flat, the thickness is therefore nominal.

GRANDE SIZES



Slabs
cm 320 x 155 x 2 126" x 61" x ¾" nominal
cm 320 x 155 x 3 126" x 61" x 1-¼" nominal

Slabs in **GRANDE** sizes not available in **STANDARD** formats.

EDGE DETAILS

There are a range of edge details available to suit desired purposes and styles. Below are just some examples of what we can do.



BULLNOSE



BEVEL



HALF BULLNOSE



OGEE



EASED



DOUBLE RADIUS



TECHNICAL DATA

Characteristics	Standard	Value	Notes
Apparent density	EN 14617-1	2000 - 2200 Kg/m3	
Water absorption	EN 14617-1	≤ 0,10 %	
Flexural strength	EN 14617-2	≥ 65 MPa	
Abrasion resistance	EN 14617-4	29 - 33 mm	
Frost resistance	EN 14617-5	KM _{f25} 0,9 - 1,2	
Thermal shock resistance	EN 14617-6	m% ≤ 0,07 %	Test temperature: 70°C
		R _{f,20} % ≤ 25 %	
Impact resistance	EN 14617-9	1,5 - 5,5 J	For thickness 10 mm, 12 mm
		≥ 8,0 J	For thickness 20 mm, 30 mm
Chemical resistance	EN 14617-10	C4	
Linear thermal expansion coefficient	EN 14617-11	40 - 50 × 10-6 °C-1	
Dimensional stability	EN 14617-12	Class A (<0,3 mm)	
Electrical resistivity	EN 14617-13	s ≥ 10 ¹⁰ Ω	Referred to surface
		v ≥ 10 ⁸ Ω m	Referred to volume
Compression resistance	EN 14617-15	150 - 250 MPa	
Length and width	EN 14617-16	± 0,5 mm	Referred to tiles
Thickness	EN 14617-16	± 0,7 mm	Referred to tiles
Straightness of sides	EN 14617-16	± 0,3 mm	Referred to tiles
Rectangularity	EN 14617-16	± 0,9 mm	Referred to tiles
Centre curvature	EN 14617-16	± 0,2% referred to length	Referred to tiles
Edge curvature	EN 14617-16	± 0,2% referred to length	Referred to tiles
Warping	EN 14617-16	± 0,2% referred to length	Referred to tiles
Mohs hardness	EN 101	up to 7 Mohs	
Thermal conductivity	EN 12524	1,3 W/(m K)	From tabulated values
Reaction to fire	EN 13501-1	Bfl-s1	
Slip resistance	EN 14231	≥ 35 (Dry)	
		≥ 3 (Wet)	
Slip resistance	DIN 51130	R9	For Honed 320

GUIDELINES FOR THE TRANSPORT, USE AND INSTALLATION OF SLABS

TRASPORTING SLABS

Slabs should be loaded onto a truck vertically, stacked on metal A-frames, and secured with chains and clamps.

A piece of wood should be placed between the chain and the upper and lower edges of the outside slabs to avoid damage to the slabs. During transportation slabs shall be kept tarped or protected from the elements.

To prevent scratching of the slab during handling and storage, slabs in polished and honed finish should be loaded in pairs with the finished face against each other. Brushed and structured finish quartz slabs should be loaded with the finished face, protected with a plastic film, against the unfinished face of the next slab.

Slabs to be shipped out in containers direct from the factory are packed in wooden bundles secured with planks and nails inside the container.

HANDLING SLABS

Slabs should be moved with a forklift boom and pinch clamp designed to carry slabs or with an overhead crane and a pinch clamp or stainless steel cables covered with plastic. The use of uncovered cables is not recommended, as they may scratch the surface of the slab.

STORING SLABS

Slabs should be stored indoors, away from direct sunlight, in order to avoid color variation from direct exposure to the sun and from the effects of weather. In case indoor storage is not feasible, we recommend covering the slabs with a tarp to protect them from the effects of weather. The A-frames for storage must have at least two uprights spaced 170-190 cm (67" – 75") apart, to avoid warping of the slabs. In storing slabs thinner than 2 cm (3/4"), we recommend vertically stacking the slab on a full surface backer slab, for example placing a 3 cm (1-1/4") slab on the A-frame and the thin slabs on top.

FABRICATION OF THE SLABS

Slabs supplied by Santa Margherita SpA have gone through a quality control check to detect possible defects on the surface. We still recommend inspecting the slabs prior to starting fabrication. If the piece to be fabricated requires more than one slab, we recommend double-checking the color match of the slabs to be used before cutting.

WARRANTY CLAIMS DUE TO IMPERFECTIONS OR DEFECTS TO SURFACE WILL NOT BE ACCEPTED AFTER SLAB HAS BEEN CUT.

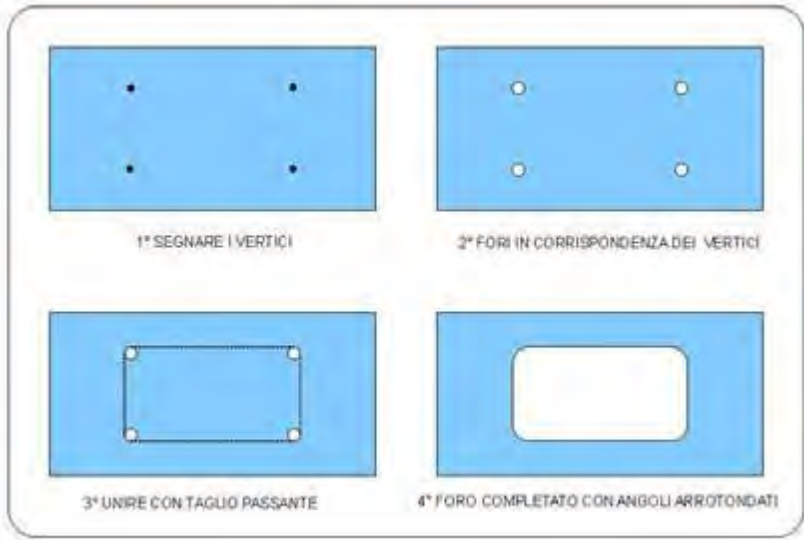
SM QUARTZ® slabs should be fabricated with tools specifically designed for quartz surfaces.

CUTTING OF THE SLABS

Prior to cutting the slab, make sure that the bridge saw and table are in good condition to avoid slab movement during cutting. The blade, suitable for cutting quartz, must be in good condition and the water flow consistent, in order to ensure the adequate cooling of the blade. To ensure a clean and consistent cut the blade's rotation speed (rpm) and the saw's travel speed must be set up according to the guidelines provided by the blade and saw manufacturer(s).

For square cut outs for sinks and cook tops proceed as follows: drill a hole (Ø 30 mm – 1- ¼") at the four corners of the square, then cut with a blade the lines between the holes, in a way to leave the corners rounded. Cut to completion and remove cutout piece. Do not leave partly attached for future completion once cutout procedure has been started. This can stress slab and cause cracking.

Please note: whenever making the cutout for the cook top, make sure the heating element is placed more than 20 mm (3/4") from the edge of the cutout. This is to avoid potential cracks due to the excessive heating of the portion of slab wrongly left too close to the edge.



POLISHING OF THE EDGES

Edges can be polished with edge polishing machines suitable for natural stones, using abrasive tools Ø 130 mm (5") for quartz based engineered stones. The piece to be polished should rest firmly on the table to prevent it from movement during fabrication. The water flow should be consistent in order to ensure adequate cooling of the tools. For quality edge polishing, the rpm and the psi of the abrasive tools should be set up according to the guidelines provided by the supplier(s) of the tools and the machinery.

IMPORTANT: While fabricating dark quartz surfaces, avoid water stagnation on the surface. This may cause a haze on the surface, that cannot be removed. We recommend to thoroughly dry the surface immediately after fabrication.

SEAMING THE PIECES

To seam the pieces use a mono-component polyester resin based adhesive, following the instructions provided by the manufacturer. The surfaces to be seamed must be unpolished, flat, dry and clean.

If necessary, the color of the adhesive can be adjusted by using either colored pigments for polyester resin or metallic oxides. The color should be added prior to adding the catalyst. Add the needed quantity of colorant to achieve the desired shade, then add the catalyst to harden the adhesive. Adding too much colored pigment may alter the physical properties of the adhesive. We recommend removing any excess adhesive from the top before final hardening takes place.

The main manufacturers of adhesives have developed a range of colored adhesives matching SM QUARTZ®. The cross reference color chart is usually published on their website.

INSTALLING THE COUNTERTOP

The fabricated countertop is to be moved and handled vertically, avoiding twists and collisions. Prior to installation, double-check that the countertop has no scratches, cracks or aesthetic defects.

Make sure the subtop is on an even and true plane. If the counter is to rest on cabinets, make sure they are set level and flush, adjust the leveling feet or shim if necessary. Vertically place the countertop on the surface, polished surface against the wall, then apply adhesive (neutral silicone) to the subtop or cabinets. Carefully lower the stone onto the subtop or cabinet.

To avoid staining the countertop during the seaming operations of the backsplash or L-shaped countertop, put painter's tape on both sides of the slab pieces where seams going to be placed, and then neutral silicone can be applied.

Any excess can be smoothed out to ensure a good fill. Remove painter's tape only after the neutral silicone is hard. Razor blade can be used to remove excess silicone, paying attention not to scratch the surface. When installing the sink and the cooktop, make sure they do not apply pressure on the cutout. Anchors should be installed as per the fixture manufacturer's recommendations.

Should some areas of the countertop not rest on a cabinet (e.g. the corner of L-shaped countertops), install anchor supports to the wall.

PLEASE NOTE! - This instruction is based on our experience. Although we try our best to ensure that the information provided is accurate and comprehensive, Santamargherita SpA does not provide a guarantee and cannot be deemed liable for the completeness or application of our specific recommendations.

INSTRUCTIONS FOR CLEANING AND MAINTENANCE OF COUNTERTOPS SMOOTH, BRUSHED, WAVE AND METROPOLIS FINISHES POST-FABRICATION CLEANING

Once the slabs have been fabricated, remove any residue with water and a clean cloth.

Thoroughly dry the surface.

Deep clean the surface by spraying an acidic or slightly alkaline pH detergent specifically designed for quartz based engineered stones, and consistently spread it with a nonabrasive sponge. Allow the detergent to work for 5 minutes, then thoroughly rinse with water until the detergent has been completely removed. Remove the excess water with a cloth and allow to dry. If the surface is dull or shows dull areas after this process, rinse again and allow to dry. If the surface still shows dirt or dull areas, repeat the whole deep cleaning process.

Quartz surfaces containing mother of pearl chips should not be cleaned with acidic detergents that will damage the mother of pearl.

PROTECTIVE TREATMENTS

All SM QUARTZ® slabs leave the factory without any kind of protective surface treatment. The technical features of the Metropolis and Wave series and of those with a brushed or honed finish are the same as those of materials with a polished finish and therefore they are acid and scratch resistant with virtually no absorption of liquids. Due to greater surface roughness, textured surfaces can be treated with products specifically for quartz agglomerate, which protect it against oily and aqueous stains and make daily cleaning easier. Neutral protective treatments are available on the market which leave the original color unaltered as well as toners that enhance. If the counter is intended for contact with food, we recommend using suitable treatments.

CLEANING AFTER INSTALLATION

During the installation mask the joints and insure that the silicone will not drip or flow out of joints onto the surface. Only use a neutral silicone to install the countertop. Remove the excess hardened silicone with a new razor blade, being careful not to scratch the surface.

After all assembly operations have been completed, clean the counter thoroughly with a neutral or slightly acidic detergent specifically for quartz-resin agglomerates.

Quartz surfaces containing mother of pearl chips shall not be cleaned with acidic detergents that will damage the mother of pearl. Be careful in cleaning the delicate metallic pieces and other acid-sensitive materials that may be in the quartz tops.

DAILY CLEANING

The daily cleaning of SM QUARTZ® surfaces is done using a damp cloth or paper towel and, if needed, a small quantity of neutral or slightly acidic pH detergent specifically designed for the daily cleaning of quartz based engineered stone surfaces.

Spread the detergent on the surface and let it work for some seconds, rinse with a cloth and water, then carefully dry the surface.

Compared to polished surfaces, smooth or textured surfaces tend to get dirty more easily and therefore, if limescale deposits, fingerprints, metallic marks or other types of stains are present, more thorough cleaning may be required.

Quartz surfaces containing mother of pearl chips shall not be cleaned with acidic detergents that will damage the mother of pearl.

Be careful in cleaning the delicate metallic pieces and other acid-sensitive materials that may be in the quartz tops.

CLEANING DIFFICULT STAINS

SM QUARTZ® countertops are highly resistant to staining. However, cleaning difficult stains may require special action, especially if these stains are not removed promptly.

Deep clean the surface by spraying a neutral or slightly acidic pH detergent specifically designed for deep cleaning quartz based engineered stone countertops, and consistently spread it with a non-abrasive cloth. Allow the detergent to work for 5 minutes, then thoroughly rinse with water until the detergent has been completely removed. Remove the excess water with a cloth and dry.

Should the stain not be completely removed, repeat the whole process.

If the counter has been treated with a protective enhancer, any thorough cleaning may have removed the treatment as well, highlighting a lighter area especially on dark surfaces.

To make the color of the surface even again, the toner should be applied again, if necessary, after removing the old treatment from the entire counter.

Quartz surfaces containing mother of pearl chips should be cleaned with neutral pH detergents only. Using acid detergent will damage the mother of pearl.

Be careful in cleaning the delicate metallic pieces and other acid-sensitive materials that may be in the quartz tops.

PREVENTING DAMAGES CAUSED BY THERMAL SHOCK OR IMPACT

SM QUARTZ® surfaces are heat resistant and can withstand a limited exposure to pots, pans or dishes at normal cooking temperature without visible damages.

Although SM QUARTZ® surfaces show higher heat resistance than any other stone countertop, they can be damaged by sudden and extreme thermal shocks. We recommend the use of trivets to avoid continued exposure of SM QUARTZ® surfaces to sources of heat.

SM QUARTZ® surfaces are highly scratch resistant, but are not scratch proof. We recommend the use of cutting boards when cutting and preparing food. You won't necessarily hurt the surface but you will dull your blades. If you do cut on the SM Quartz countertop and see a dark line, this is the metal from your blade. It can be removed with a pencil eraser.

CHEMICALS TO BE AVOIDED

Avoid exposing SM QUARTZ® to chemicals and solvents, especially paint removers, that might contain thrichlorethane and methylene chloride. Keep solvents, nail polish remover, acetone, alcohol, thinners, detergents containing bleach, laundry bluing, highly alkaline liquids such as bleach, caustic soda or oven cleaners, acids, oily soaps, descalers, markers or ink, abrasive and micro-abrasive detergents away from the surface.

Avoid using any detergent not specifically designed for quartz surface, especially acidic and highly alkaline determents. Finally, avoid using highly abrasive sponges that may scratch the surface.

Should any of the above listed liquids drip on the quartz surface, remove it immediately and thoroughly rinse with water.

Even though an occasion exposure to alkaline products does not damage SM QUARTZ® surfaces, highly alkaline detergents (high pH) are not recommended for daily cleaning. The use of highly alkaline detergents may damage the surface of the material.

Quartz surfaces containing mother of pearl chips shall be cleaned with neutral pH detergents only. Using acid detergent will damage the mother of pearl. Be careful in cleaning the delicate metallic pieces and other acid-sensitive materials that may be in the quartz tops. It is recommended to use only a neutral silicone to install the countertop.

DETERGENTS TESTED AND APPROVED BY SANTAMARGHERITA R&D

Deep cleaning detergents (acid or slightly alkaline Ph):

DRAGO PULISAN ANTICALCARE	Guaber srl
FILAVIA BAGNO	Fila Industria Chimica SpA
LEM 3	Bellinzoni srl
QUARTZ CLEANER	Faber Chimica srl

Daily cleaning (neutral or slightly acid pH):

BRIO TOP	Tenax Spa
FILA REFRESH	Fila Industria Chimica SpA
LEM 3*	Bellinzoni srl
TOP CLEANER	Faber Chimica srl

*Slightly alkaline pH product.

Notes: Drago Pulisan Anticalcare, Filavia Bagno, Fila Refresh, Brio Top, Quartz Cleaner, Top Cleaner tested not diluted

LEM 3 tested at 1:10 dilution

The detergents must be used at the dilution suggested by the manufacturer.

COMMONLY USED PROTECTIVE TREATMENTS

Below is a list of some products, for information purposes only, suitable for contact with food, which are used to treat textured surfaces.

Neutral treatments:

IDEA HP	Bellinzoni S.r.l.
MP 90	Fila Industria Chimica S.p.A.
SKUDO	Tenax S.p.A.

Enhancing treatments:

IDEA QUARTZ	Bellinzoni S.r.l.
QUARTZ TONER	Tenax S.p.A.
STONE PLUS	Fila Industria Chimica S.p.A.
DEEP ENHANCER	Faber Chimica S.r.l.

Note: Apply the treatments by following the manufacturer's instructions.

IMPORTANT! - The content of this recommendation is based on our experience. Although we strive for thoroughness and accuracy of the information we provide, SANTAMARGHERITA® this is not a warranty and we can't take any responsibility for the exactness and applicability of this document.

SM QUARTZ RESIDENTIAL WARRANTY

Santa Margherita S.p.A. warrants to the owner of the original installation that its quartz surfacing (the "product"), when installed in accordance with Santa Margherita's current installation procedures shall be free from manufacturing defects for a period of ten (10) years from the date of completion of installation of the product.

This warranty applies to the repair or replacement of failed material that has been permanently installed in your residence. The option to repair or replace the material is at the sole discretion of Santa Margherita S.p.A. No representative, dealer, salesperson, distributor, fabricator or any other person is authorized to make any warranty or promises on behalf of Santa Margherita S.p.A. with respect to SANTAMARGHERITA® quartz surfacing products. No terms or conditions other than those stated herein, and no agreement or understanding, oral or written, in any way purporting to modify this warranty shall be binding upon Santa Margherita S.p.A. unless made in writing and signed by an authorized employee of Santa Margherita S.p.A.

Santamargherita S.p.A. shall be responsible for either replacement of the product found by it to be defective or, at Santa Margherita's option to pay the product replacement cost, but in no case more than the original invoice cost of the product found to be defective. Under no circumstances will Santa Margherita S.p.A. be responsible for the cost of other material or products in addition to the quartz surfacing which is the subject of this warranty, nor will Santamargherita pay for the cost of fabrication, removal or installation of the defective product.

Terms and Conditions

1. This warranty applies to products that have been maintained according to the Santa Margherita's quartz surfacing care and maintenance Instructions, available at www.santamargherita.net.
2. This warranty is issued to the original owner of the structure into which the warranted product was originally permanently installed. This residential warranty is transferable within the 10-year period following initial installation.
3. This warranty shall be null and void unless the products have been paid for in full.
4. Santa Margherita S.p.A. or Santa Margherita's authorized agents must be permitted to inspect the product and thereafter to follow Santa Margherita's warranty services procedures. All decisions regarding the existence of manufacturing defects or affecting this warranty shall be made by Santa Margherita S.p.A. and shall be final binding upon the parties.

Exclusions

A. This warranty does not cover damages caused by mishandling, misuse, and damage from excessive heat or uneven exposure to weather conditions physical or chemical abuse, chemical damage, or uses of products exposed to outside weather and climate conditions.

B. This warranty does not cover damage or injury caused in whole or in part by acts of God, climate, job site conditions, architectural and engineering design, structural movement, acts of vandalism, accident, war.

C. If after or during installation you decide that you do not like the color or finish you selected, that decision is not covered under this warranty.

D. This warranty does not cover natural variations in the color, size, shape and distribution of the pattern of the natural quartz or the natural variations in background tone. These characteristics are inherent and unique characteristics of the product. Color samples provided to consumers, dealers and fabricators are only representative and not an exact replication of what will be installed in your home.

E. This warranty does not cover scratches. Santa Margherita is a very hard material and highly scratch resistant but not scratch proof. Proper care must be exercised including the use of a cutting board as part of your care and maintenance.

F. This warranty does not cover what is referred to as spots or blemishes smaller than a U.S. twenty- five (25) cent piece. A certain level of spots or blemishes are inherent in the manufacturing process and do not affect the structural integrity of the material.

G. This warranty does not cover thermal shock, seam appearance and/or seam performance, improper, insufficient or poorly designed support, cabinets, structures or substrates for countertops. Once the product is installed, the main reasons for seam separation or cracking are the shifting or movement of the substrate, cabinets or foundation, and more than a brief period. Trivets or hot pads should always be used.

H. This warranty does not cover any defects that were visible at the time of fabrication and were not avoided during fabrication. Fabricators are required to perform a visual inspection of all materials prior to fabrication and again prior to installation.

I. This warranty does not cover failures due to fabricators/installers not following the prescribed fabrication and installation procedures as outlined by Santa Margherita S.p.A., included, but not limited to, creative use of the material (e.g. bending, curving, milling, reducing thickness), securing mechanical fasteners directly into the material, dry cutting or polishing, altering of any factory applied finish, not following the minimum requirements for edge details.

J. This warranty does not cover additional modifications such as plumbing, electrical, tile, cabinets, flooring etc. that may be necessary to repair or replace the Santa Margherita products.

K. HONED, BRUSHED AND TEXTURED FINISHES will require more daily maintenance than our polished finishes. Since there is more exposed surface area with honed, brushed and textured finishes, metal marks, finger prints and other signs of daily living will be more apparent, especially on the darker colors. However, superficial marks like these can be removed with little effort and by using non-abrasive cleaning products such as Soft Scrub Liquid Gel with Bleach or Comet Gel and a Scotch Brite pad. Temporary marks that are inherent to the honed finish are not covered by this Warranty.

SANTA MARGHERITA S.p.A. SHALL HAVE NO LIABILITY FOR ANY OTHER LOSS, DAMAGE OR EXPENSE, ARISING OUT OF OR IN CONNECTION WITH THE INSTALLATION OF ITS QUARTZ SURFACING. IN NO EVENT SHALL SANTA MARGHERITA S.p.A. BE LIABLE FOR SPECIAL, INDIRECT, INCIDENTAL, PUNITIVE, CONSEQUENTIAL OR ANY SIMILAR DAMAGES (INCLUDING, WITHOUT LIMITATION, DAMAGES FOR LOSS OF BUSINESS PROFITS, BUSINESS INTERRUPTION OR ANY OTHER LOSS), WHETHER OR NOT CAUSED BY OR RESULTING FROM THE NEGLIGENCE OF SANTA MARGHERITA S.p.A. EVEN IF SANTA MARGHERITA S.p.A. HAS BEEN ADVISED OF THE POSSIBILITY OF SUCH DAMAGES. SOME STATES DO NOT ALLOW THE EXCLUSION OR LIMITATION OF INCIDENTAL OR CONSEQUENTIAL DAMAGES SO THE ABOVE LIMITATION AND EXCLUSION MAY NOT APPLY TO YOU. THIS WARRANTY GIVES YOU SPECIFIC LEGAL RIGHTS AND YOU MAY HAVE OTHER RIGHTS, WHICH VARY FROM STATE TO STATE. THIS WARRANTY IS IN LIEU OF ANY OTHER WARRANTIES EXPRESSED OR IMPLIED.

Service

To make a claim or obtain service under this Limited Warranty you must submit your claim in writing to:

Santa Margherita S.p.A.

Via del Marmo, 1098

37020 Volargne (Verona) – Italia

Tel. +39 0456835888

Fax +39 0456385800

e-mail: info@santamargherita.net

www.santamargherita.net

The claim is to be submitted within thirty (30) days of the failure of Santa Margherita quartz surfacing material.

Please, provide the following information:

1. Proof of purchase in the form of a copy of your original receipt or invoices showing the name of the Owner.
2. Your name, address, telephone number and e-mail address (if available)
3. Description of the product application for which the claim is made, including the color and thickness of the product.
3. Date of purchase or date of installation, whichever is earlier.
4. Name or Retailer, Installer or Fabricator from whom you purchased the Product.
5. A description of the claim.

A Santa Margherita Customer Care Representative will contact you to follow up on your claim.

Purveyors of the World's Finest
Natural Stone, Engineered Stone, and Porcelain Slab Surfaces.
This Product is exclusively imported & distributed by;

www.GlobalStoneMG.com
Contact your Manufacture Representative
for Product Support, Pricing, & Samples.



GLOBAL STONE MARBLE & GRANITE

www.Soliainc.com

Manufactures' Representatives
Dimensional Surfaces For Your Creative Ideas™